



ACCESSORIES FOR HEAVY-DUTY MODULES



TOWED AND SELF-PROPELLED



CONTENTS

GENERAL ACCESSORIES	04
TOWING EQUIPMENT	08
LOADING EQUIPMENT	12
TURNTABLES	20
ACCESSORIES FOR PST	22
ACCESSORIES FOR »ADDRIVE«	23



HEAVY-DUTY MODULES (TOWED + SELF-PROPELLED)



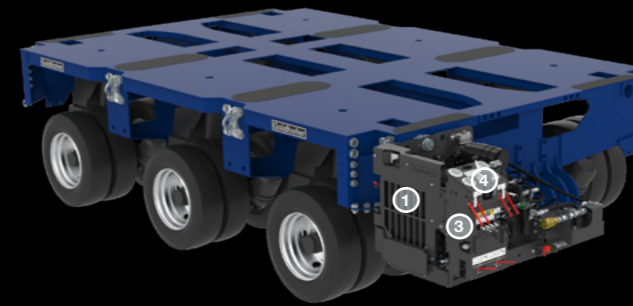
All specified technical configurations are component- combination-specific. This allows a high degree of flexibility in the use of accessories, although not every accessory piece can automatically be combined with every other accessory or each vehicle. If you have any question regarding the compatibility of the accessories, please contact your Goldhofer sales partner.

GENERAL ACCESSORIES CONFIGURATION EXAMPLES

We offer you almost limitless possibilities to adapt your heavy-duty module combination to the application and the respective country regulations.



BASIC CONFIGURATION



- 1, 2 HYDRAULIC POWER PACK
- 3 CONTROL PANELS
- 4 TRAILER BRAKE VALVE

DRAWBAR CONFIGURATION



- 1, 2 HYDRAULIC POWER PACK
- 3 CONTROL PANELS
- 4 TRAILER BRAKE VALVE
- 9 OVERWIDTH MARKER BOARD
- 12 HYDR. OIL TANK 260 L
- 17 DRAWBAR
- 18 STEERING SWIVEL ARM

PUSH CONFIGURATION



- 1, 2 HYDRAULIC POWER PACK
- 8 EU REAR LIGHTING BUMPER
- 10 PUSH COUPLING
- 11 PUSH ROD
- 15 MOUNTING PLATE

GENERAL ACCESSORIES

FOR INDIVIDUAL REQUIREMENTS

HYDRAULIC POWER PACKS

01 HATZ HYDRAULIC POWER PACK

- + Output 10 kW / 13.6 PS / 4-stroke
- + Engine output appx. 12 l/min
- + Pressure 340 bar
- + Exhaust emission standard EU Stage V
- + Control panel
- + With/without noise reduction



02 KOHLER DIESEL HYDRAULIC POWER PACK

- + Output 17.9 kW / 24.3 PS / 4-stroke
- + Engine output appx. 21 l/min
- + Pressure 340 bar
- + Compressor 32 l/min
- + Exhaust emission standard TIER 4 FINAL / EU STAGE V
- + Control panel



03 CONTROL PANEL

- + Manual steering, lifting & lowering



04 TRAILER BRAKE VALVE

- + Manual brake



05 CABLE / RADIO REMOTE CONTROL

- + Manual steering



06 AIR DRYER



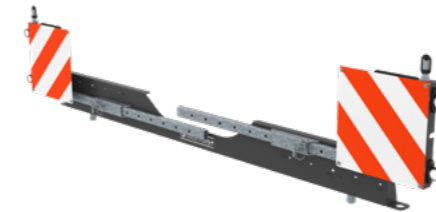
07 STANDARD LIGHTS

- + Removable



08 EU REAR LIGHTING BUMPER

- + Removable



09 OVERWIDTH MARKER BOARD

- + With bracket for mounting on loading area
- + Removable



10 PUSH COUPLING

- + For maneuvering the bogies



11 PUSH ROD

- + For using a second tractor



12 HYDR. OIL TANK 260 L

- + For extra oil volume



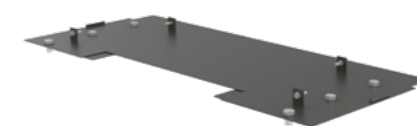
13 HYDR. OIL TANK 95 L

- + For extra oil volume



14 CONTROL PANEL FOR LONG LOAD TRANSPORT

- + For monitoring and operating the self tracking device



15 MOUNTING PLATE MARKER BOARD

- + For mounting a PowerPack onto the loading platform



16 TRIANGLE THRUST COUPLING

DRAWBAR & STEERING SWIVEL ARMS

Whether as a drawbar trailer combination or converted into a 5th wheel trailer combination: Our heavy-duty modules and comprehensive portfolio of accessories offer almost limitless flexibility.



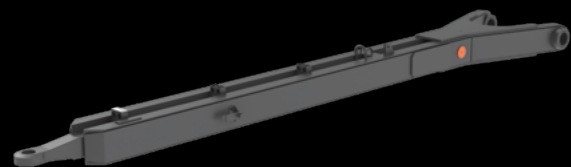
17 DRAWBAR

YOUR BENEFITS

» Our robust, easy-to-change drawbars allow pulled Combinations according to individual requirements.

TECHNICAL DATA

- + Total towing weight up to 500 t
Optional 1,000 t
- + Length 2,000 mm / 3,000 mm / 5,000 mm / 7,000 mm / 9,000 mm
- + Drawbar eye diameter 50 mm
- + With or without support wheel



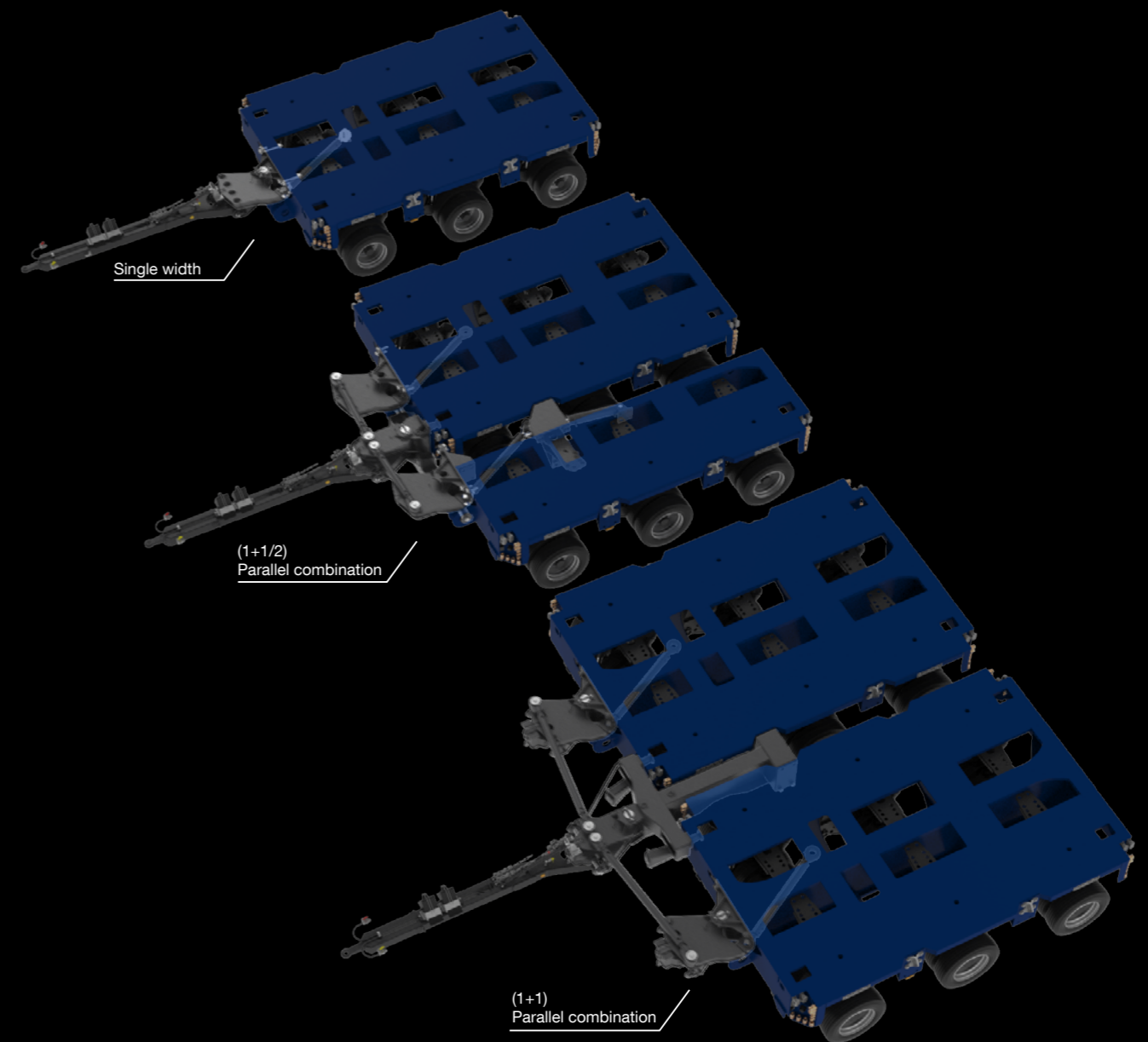
18 STEERING SWIVEL ARMS

YOUR BENEFITS

» In order to be able to move even the heaviest loads safely, our towed and self-propelled heavy-duty modules offer the possibility to adapt to any load in single width parallel combinations.

TECHNICAL DATA

- + Total towing weight up to 500 t
Optional 1,000 t



TOWING EQUIPMENT GOOSENECKS

Thanks to their simple operation, Goldhofer-goosenecks are ideally equipped for any type of transport.



UNIVERSAL GOOSENECK

YOUR BENEFITS

» Combinable with our heavy-duty modules or directly with loading decks, these hydraulic goosenecks are true all-rounders.

TECHNICAL DATA

- + Fifth wheel load ^[1] 26 t / 35 t / 45 t / 52 t
- + Length ^[1] 3,700-4,300 mm
- + 5th wheel coupling heights 1,300-1,450 mm
- + Swing clearance radius ^[1] 2,500-3,400 mm
- + Kingpin 2 " / 3.5 "
- + Hydraulic coupling pins



^[1] Fifth wheel load, length and swing clearance radius are dependent on each other.

COMBINATION GOOSENECK

YOUR BENEFITS

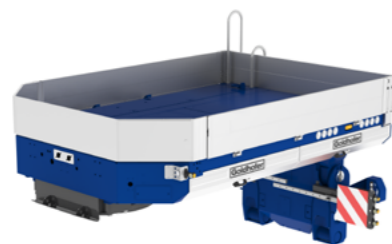
» With our hydraulically operated combination goosenecks, you are perfectly equipped to use any Goldhofer-heavy duty module like a semitrailer.

TECHNICAL DATA

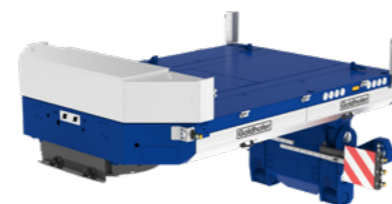
- + Fifth wheel load 26 t / 35 t
- + Length 3,700 mm
- + 5th wheel coupling heights 1,300-1,450 mm
- + Swing clearance radius 2,500-2,800 mm
- + Kingpin 2 " / 3.5 "
- + Hydraulic coupling pins



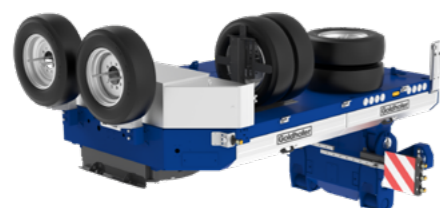
19 ALUMINIUM SIDE WALLS



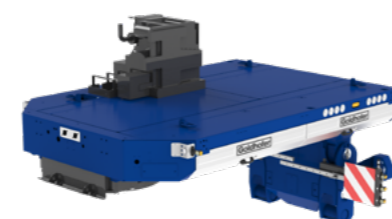
20 STORAGE BOX



21 SPARE WHEEL CARRIER



22 POWER PACK UNIT



LOADING EQUIPMENT HEAVY-DUTY MODULES

Whether different deck variants, turntables, or telespacers for long material transports: We offer the ideal solution for every load and enable you to flexibly configure your heavy-duty module combination.



DROP DECKS

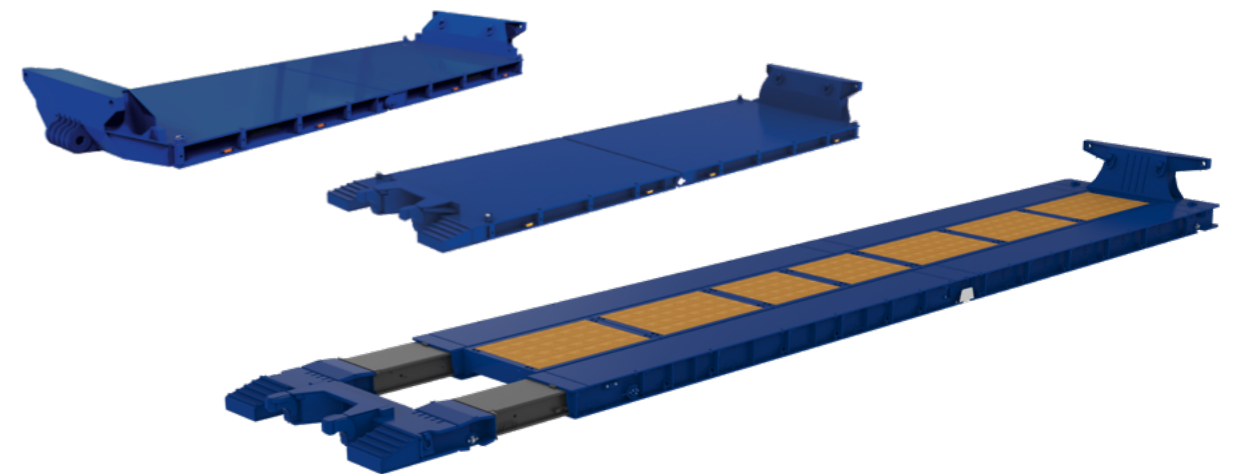
YOUR BENEFITS

» Different lengths, heights, capacities, as well as optional extensions, give you unbeatable flexibility when things have to get low.

TECHNICAL DATA

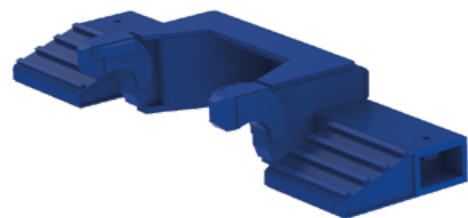
- + Construction height ^[1] 250 mm / 300 mm
- + Length 7,000-10,000 mm
- + With/without pin joint
- + Can be loaded from the front up to a construction height of 250 mm

^[1] Other heights on request.



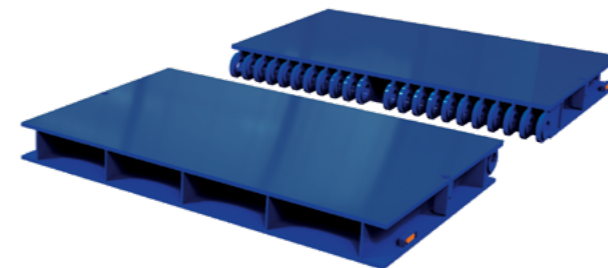
01 QUICK COUPLING ADAPTER

- + For frontend loading



02 HOOK COUPLING & CLIMBING RAMPS

- + For frontend loading (optional)



03 LASHING COUPLING

- + For extension (optional)



04 FOLDABLE OUTRIGGERS

- + For wider loading platform (optional)





VESSEL DECKS

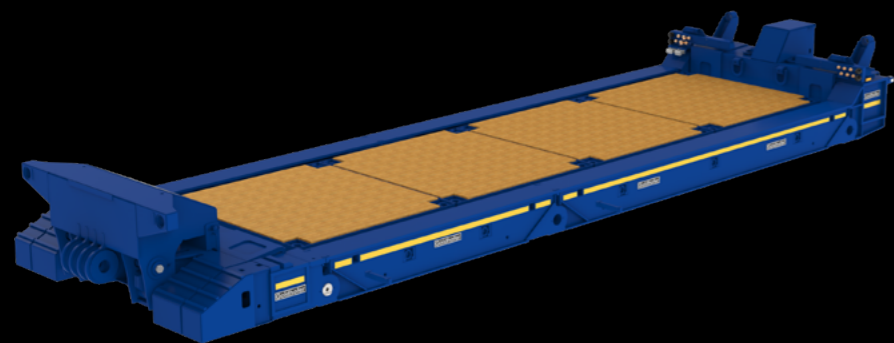
YOUR BENEFITS

» Goldhofer vessel decks can be configured and converted in several different ways for optimal transport conditions.

TECHNICAL DATA

- + Construction height ^[1] 450 mm / 500 mm / 650 mm
- + Width ^[1] 3,000-6,000 mm
- + Rigid or extendable longitudinal beam

^[1] Other variants on request.

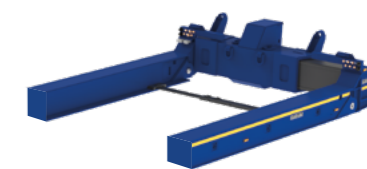


VESSEL DECK



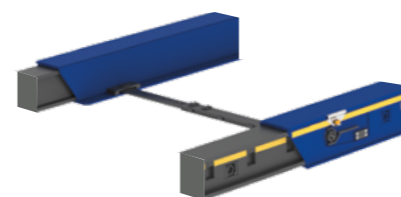
HOOK COUPLING & CLIMBING RAMPS

- + For frontend loading
- + With integrated hydraulic jacks



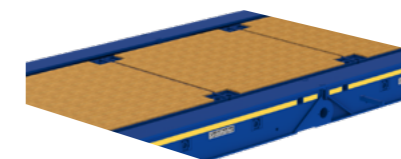
WIDTH HYDRAULIC ADJUSTABLE

- + Front/rear cross beam



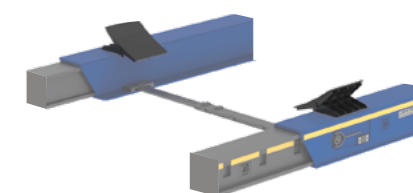
CROSS BRACES

- + To secure longitudinal beams



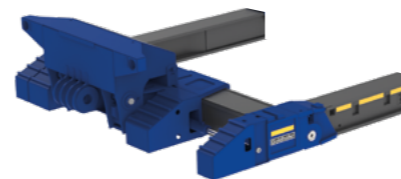
DECK INSERT

- + With wooden floor
- + Adjustable in height



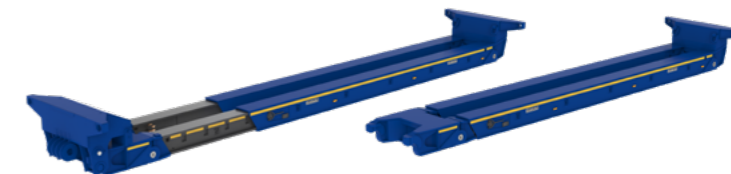
VESSEL SUPPORTS

- + Optional



QUICK COUPLING ADAPTER

- + For frontend loading



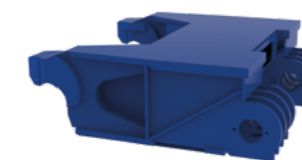
EXCAVATOR DECK

- + Optional extendable



EXAVATOR DECK ADAPTER REAR

- + For longitudinal beams



EXCAVATOR DECK ADAPTER FRONT

- + For longitudinal beams



NARROW DECK ADAPTER FRONT-REAR/HIGH-LOW

- + For longitudinal beams



EXCAVATOR DECKS

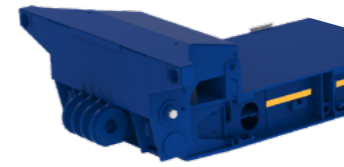
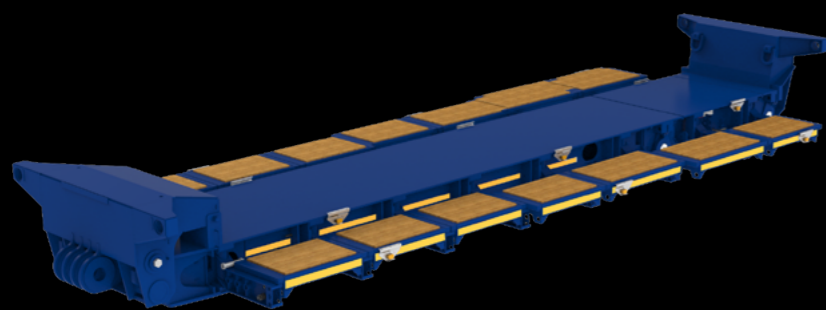
YOUR BENEFITS

» Our robust excavator decks are designed to take on even the heaviest loads.

TECHNICAL DATA

- + Construction height ^[1] 350 mm / 450 mm / 500 mm
- + Rigid or extendable
- + Outriggers
- + Integrated hydraulic jacks
- + Ramps

^[1] Other heights on request.

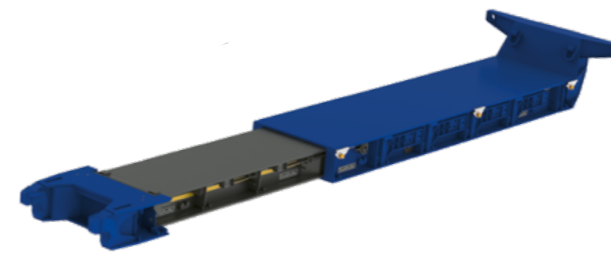


QUICK COUPLING ADAPTER



LASHING COUPLING

- + For longitudinal extension



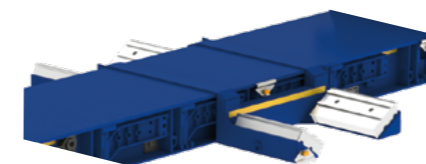
EXCAVATOR DECK

- + Rigid or extendable



EXCAVATOR DECK

- + With lashing coupling for extension



WHEEL RECESSES



FOLDABLE WIDENING EXTENSIONS

- + Height-adjustable



INTERMEDIATE SPACER

YOUR BENEFITS

» The intermediate spacer extends the loading area or axle spacing without unnecessary axle load.

TECHNICAL DATA

- + Length 3,000–9,000 mm
- + Available for THP and PST



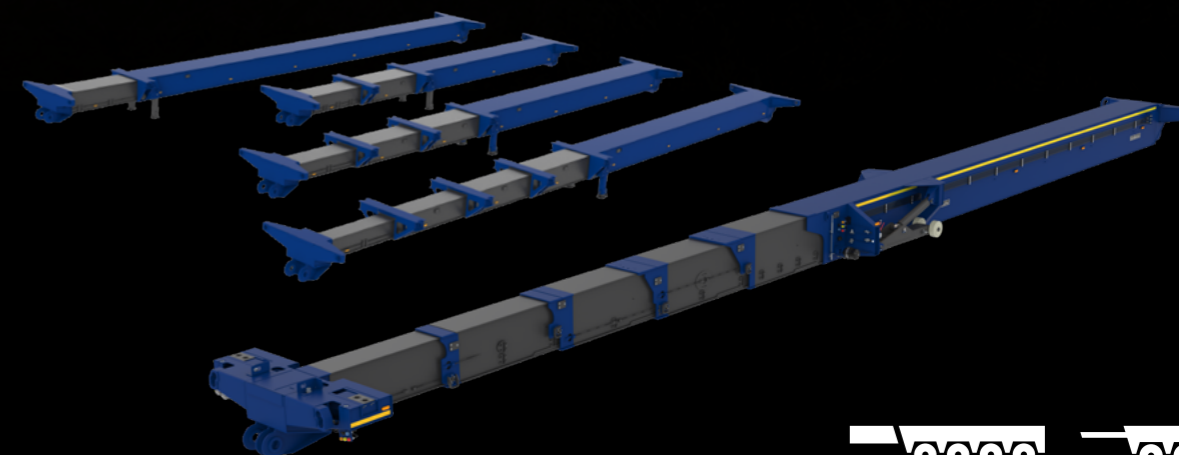
SPACER

YOUR BENEFITS

» Our extendable spacers are suitable for the safe transport of extremely long loads.

TECHNICAL DATA

- + Length 8,000-15,000 mm
(extendable up to 69,000 mm depending on version)
- + Available in 1-5 times extendable
- + With or without precambering





TURNTABLES HEAVY-DUTY MODULES

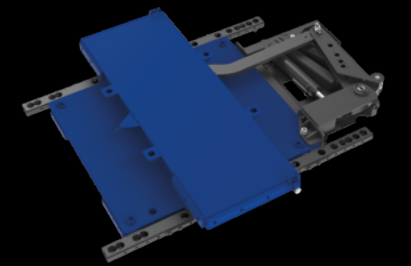
Turntables are essential, especially when transporting long loads. While the height and weight distribution can be cleverly influenced by our vehicles, the length is usually based on the load and cannot be readjusted. This is where Goldhofer's easily mountable turntables provide a solution. From 100-600t, they are flexible and improve the transport of long and self-supporting goods.



TURNTABLES 100 T / 200 T

TECHNICAL DATA

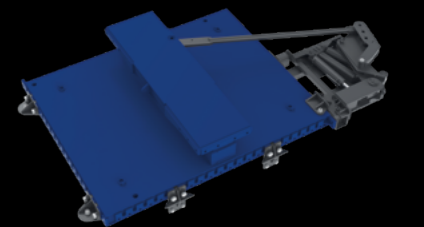
- + Load capacity per table 100 t / 200 t
- + Table mounted by ball on the load distribution frame
- + Integrated lift-off protection
- + With/without sliding shoe
- + Self-tracking device
- + Suitable for combination in single width



TURNTABLES 300 T / 400 T / 600 T

TECHNICAL DATA

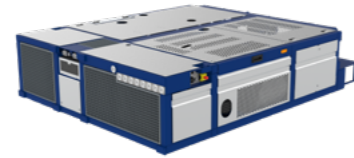
- + Load capacity per table 300t/400t/600t^[1]
- + Table mounted by ball on the load distribution frame
- + With/without spacer
- + With/without sliding shoe
- + Self-tracking device^[2]
- + Optional combination in single width, one-and-a-half, and double width



ACCESSORIES FOR PST SELF-PROPELLED MODULES

Perfectly matched to your requirements: Our PowerPacks are reliable performers in your self-propelled combination.

POWERPACK



- + 207 kW/280 PS
- + Width 2,400 mm
- + Cummins
(EU STAGE V / EPA TIER 4 FINAL)

- + 360 kW / 490 PS
- + Width 2,400 mm / 3,000 mm
- + Deutz
(EU STAGE IIIa / EPA-TIER 3)

- + 390 kW / 530 PS
- + Width 2,400 mm / 3,000 mm
- + Deutz
(EU STAGE V / EPA TIER 4 FINAL)



- + E-PowerPack
- + 250 kW / 340 PS

ACCESSORIES FOR »ADDRIVE« SELF-PROPELLED MODULES

We offer you almost limitless possibilities to adapt your heavy-duty module combination to the application and the respective country regulations. Your Goldhofer-consultant will be pleased to prepare an individual offer for you.

POWERPACK



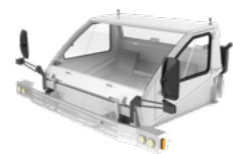
- + 207 kW / 280 PS
- + Width 3,000 mm
- + Cummins
(EU STAGE V / EPA TIER 4 FINAL)

- + 390 kW / 530 PS
- + Width 3,000 mm
- + Deutz
(EU STAGE V / EPA TIER 4 FINAL)

GENERAL ACCESSORIES



RADIO REMOTE CONTROL



DRIVER'S CAB



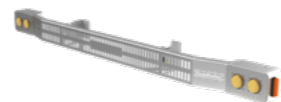
DRIVER'S SEAT



- + Cable remote control for emergency operation (left)
- + Cable remote control (right)



LIGHTING



BUMPER

- + with front headlights

GENERAL ACCESSORIES



RADIO REMOTE CONTROL



DRIVER'S SEAT

- + Only for internal use at walking speed in self-propelled mode



HYDRONIC

- + For synchronization of steering of towed modules



»ADDRONIC«

- + For synchronization of self-propelled modules





CONTACT TRANSPORT TECHNOLOGY

GOLDHOFER AKTIENGESELLSCHAFT

Donaustrasse 95, 87700 Memmingen/Germany
Tel.: +49 8331 15-0, Fax: +49 8331 15-239
Web: www.goldhofer.com, E-Mail: info@goldhofer.com

SALES

Telephone Sales Europe: +49 8331 15-341
Telephone Sales International: +49 8331 15-342
E-Mail: sales-transporttechnology@goldhofer.com

SERVICES AND SPARE PARTS

Telephone: +49 8331 15-400, Fax: +49 8331 15-247
Emergency Hotline: +49 172 837 61 65
E-Mail: service-transporttechnology@goldhofer.com