



# PURE EFFICIENCY: TRANSPORT SOLUTION FOR CABLE DRUMS

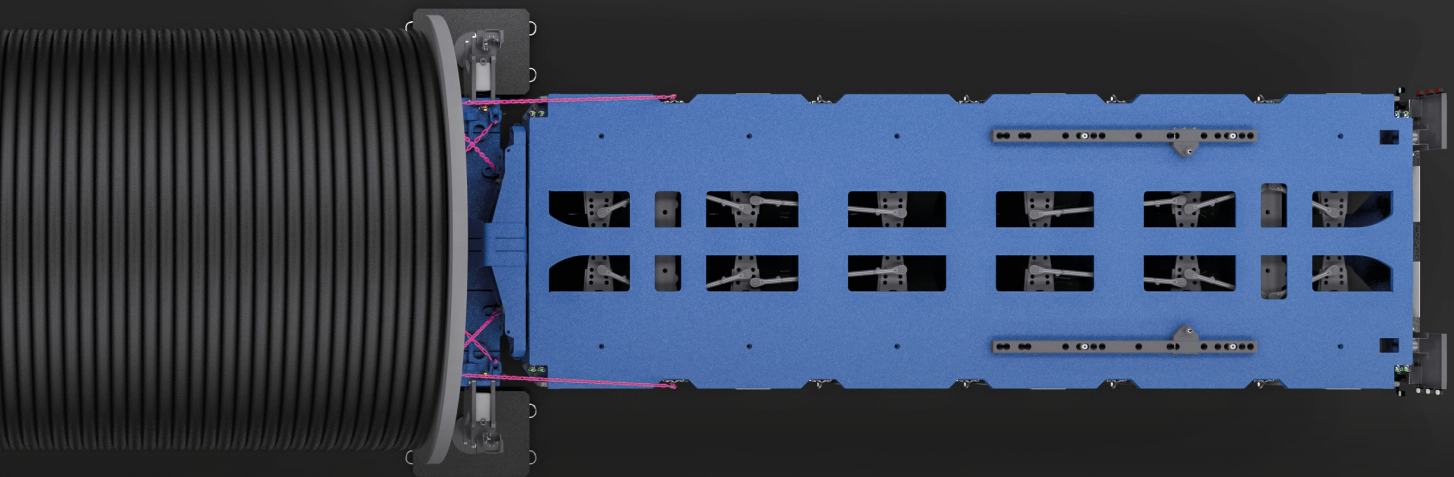
SPECIAL APPLICATIONS

---



# PURE EFFICI

---



# ENCY

## FOR THE ENERGY TRANSITION

The “transition,” the transformation of energy generation from fossil fuels to sustainable and socio-ecologically compatible alternatives, is an ambitious project for many national economies. Bigger, more powerful, more efficient: New requirements are not only pushing the infrastructure, legislation, and the components themselves to their limits. In heavy-duty transport, too, cargo that is usually large and heavy must reach its destination with increasingly efficient solutions.

Whereas the construction and expansion of facilities for the generation of renewable energy plants has been in the foreground up to now, the focus is increasingly shifting to downstream

processes. New power lines and grids must be built. The energy generated is fed into increasingly intelligent networks (so-called “smart grids”) to reach the end consumer. Their expansion constitutes a huge logistical undertaking. One central element for the new electricity highways are cables with a diameter of approx. 150 mm and a length of up to 2.5 km, which are transported to the construction site between the transmission joint bays on huge cable drums.

# THE SOLUTION

## FOR MODERN INFRASTRUCTURE PROJECTS:

- » Cable drums with flange distances of approx. 3 - 11.5 m
- » Cable length up to 2.5 km
- » Weight up to 100 t

## SPECIAL CHALLENGE IN THE TRANSPORT OF CABLE DRUMS:

- » Cables can be unwound or retracted "from a single source" in very few cases
- » Significantly higher costs for transport and unwinding technology, as well as the entire approval process

## THE COMPREHENSIVE GOLDHOFER SOLUTION:

- » Portfolio for the transport of cable drums of different weights and sizes
- » Takes customer needs during transport and the special challenges of the unwinding process into account
- » Enormous efficiency gains through the ability to act as a sole supplier across projects

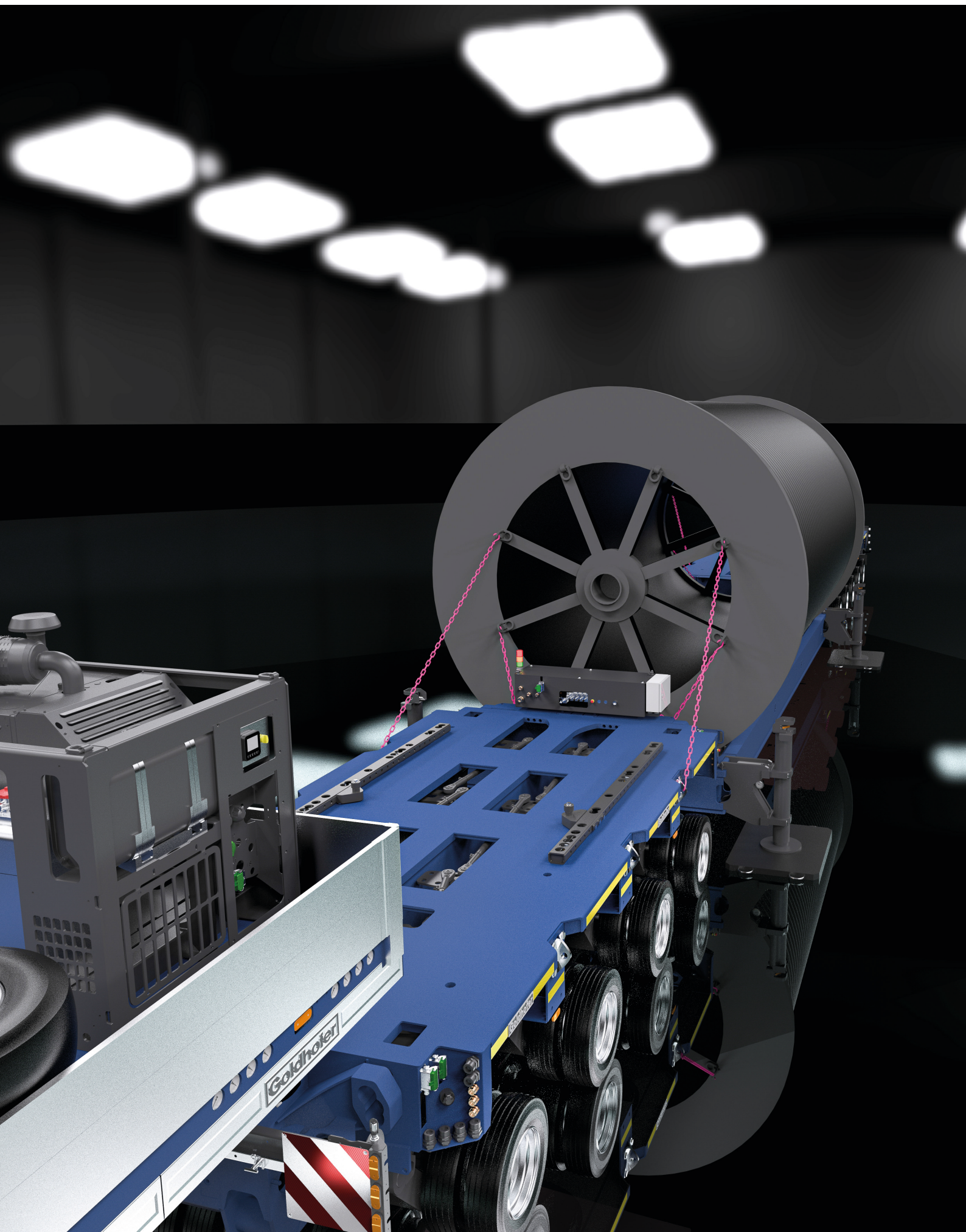
## TECHNICAL APPROACH

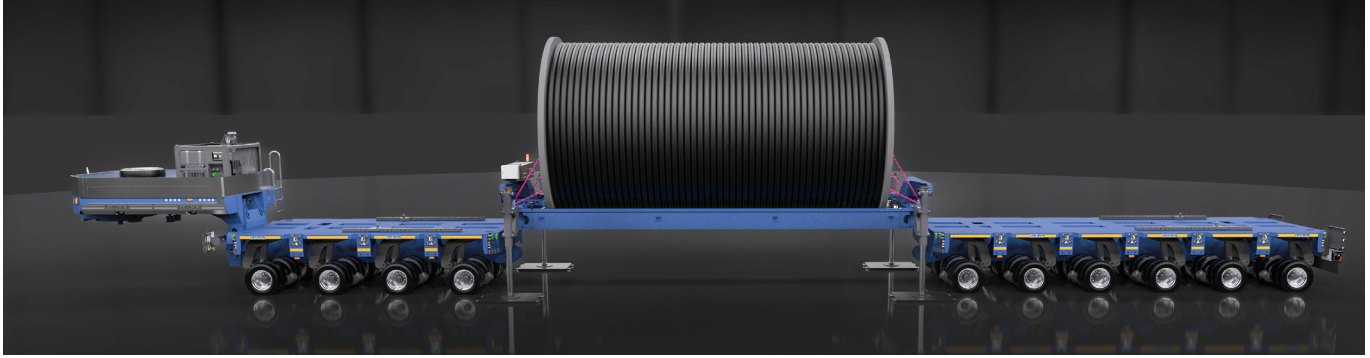
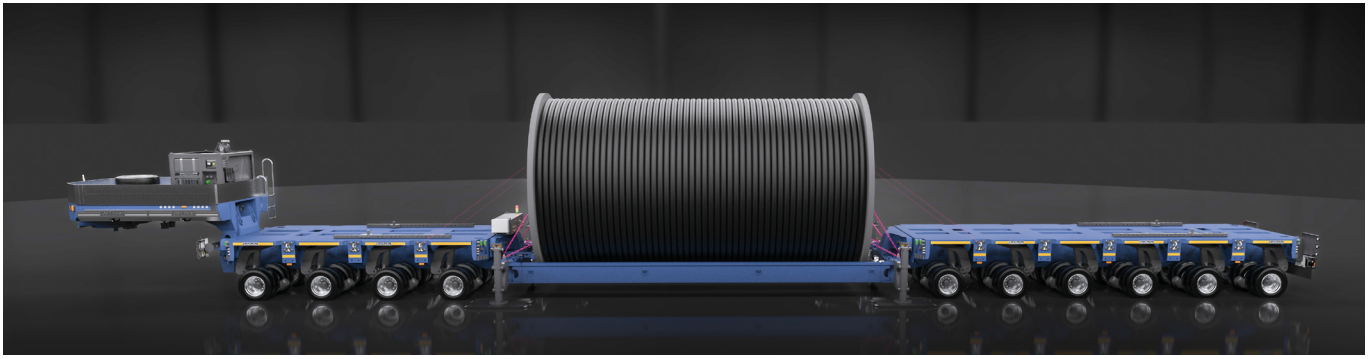
- » Cable drums are transported in a special vessel deck within a Goldhofer heavy-duty module combination
- » Lifting of the bridge under full load to loading area level using easy-to-install hydraulic supports
- » Driving under the bridge with the module combination significantly reduces the overall length for the "last mile"
- » High maneuverability on different job site topographies, especially when combined with self-propelled modules
- » Integrated unreeling equipment with synchronization enables jerk-free cable retraction

## RETROFITABILITY

- » Integration into existing Goldhofer fleet
- » Initial investment can be designed according to individual requirements

**3 - 11.5 m**  
**2.5 km**  
**100 t**





# TECHNICAL FEATURES

- + Hydraulic stroke 900 mm
- + Beam height 455 mm
- + Coupling length up to 13,700 mm
- + Flange distance up to 11,500 mm

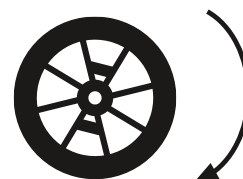


≤ 100 t  
MAXIMUM  
PAYLOAD



≤ 11,5 m

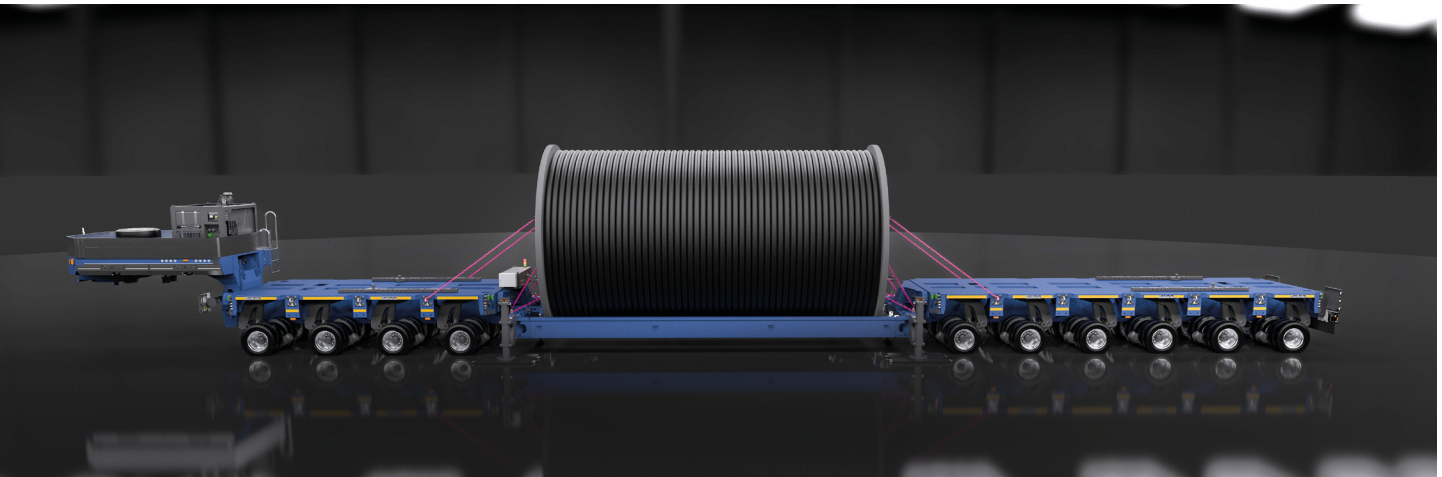
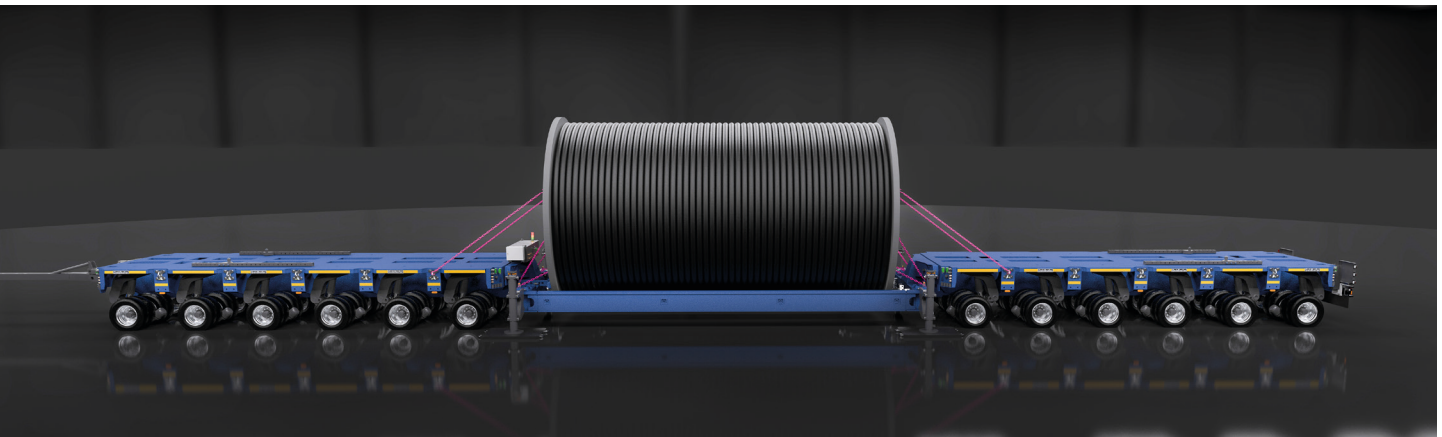
INTEGRATED UNWINDING  
DEVICE



MAXIMUM FLANGE  
DISTANCE



# MAXIMUM FLEXIBILITY





# YOUR BENEFITS

- ✓ Flexible combination with Goldhofer module fleet
- » Low investment and transport costs
- ✓ Low overall train length and height, and low overall weight
- » Simplified approval
- ✓ Transport incl. unwinding “from a single source”
- » Tapping new market potential through unprecedented efficiency



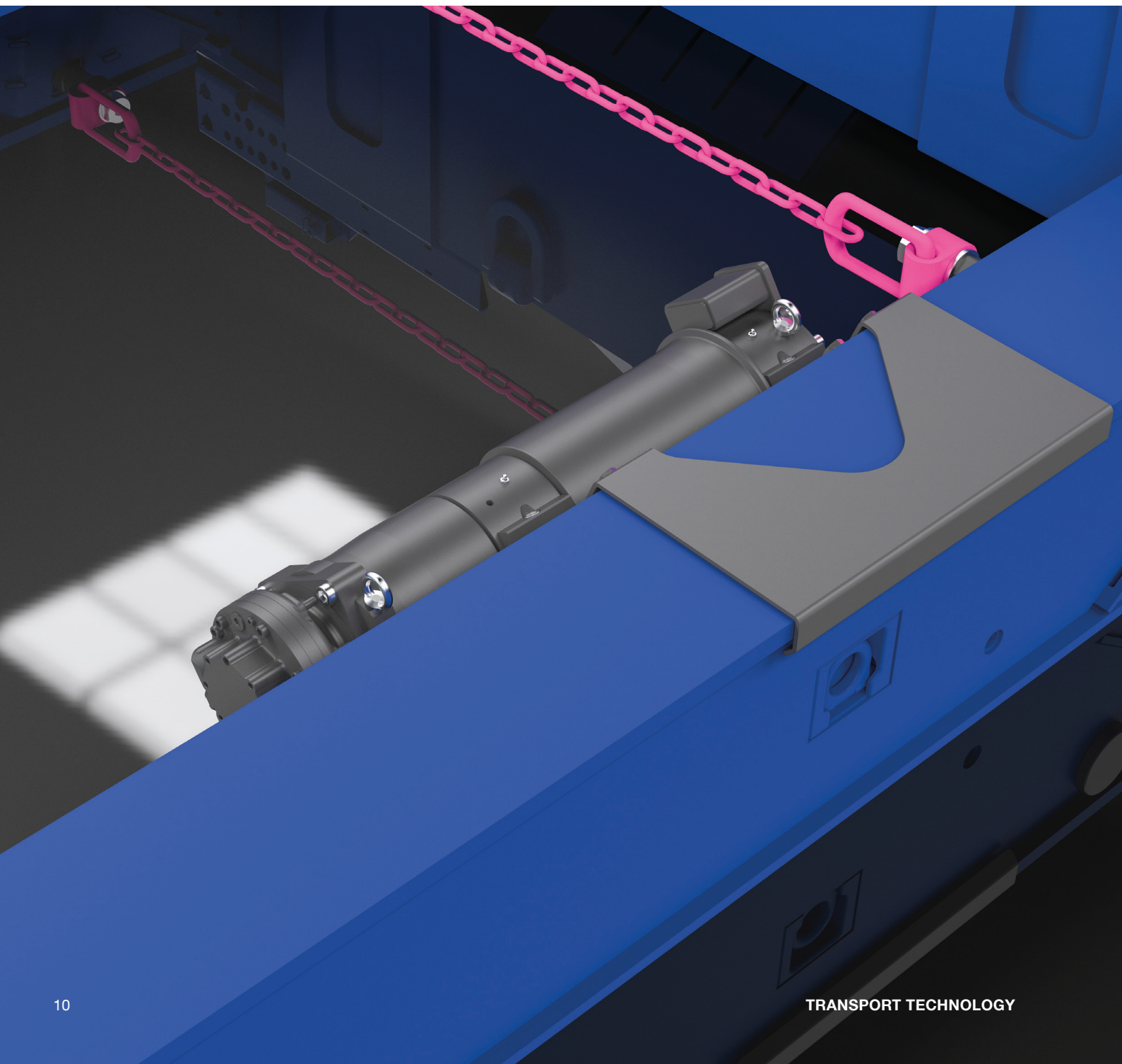
**AWARD-WINNING**  
**INNOVATOR**  
des Jahres **2023**

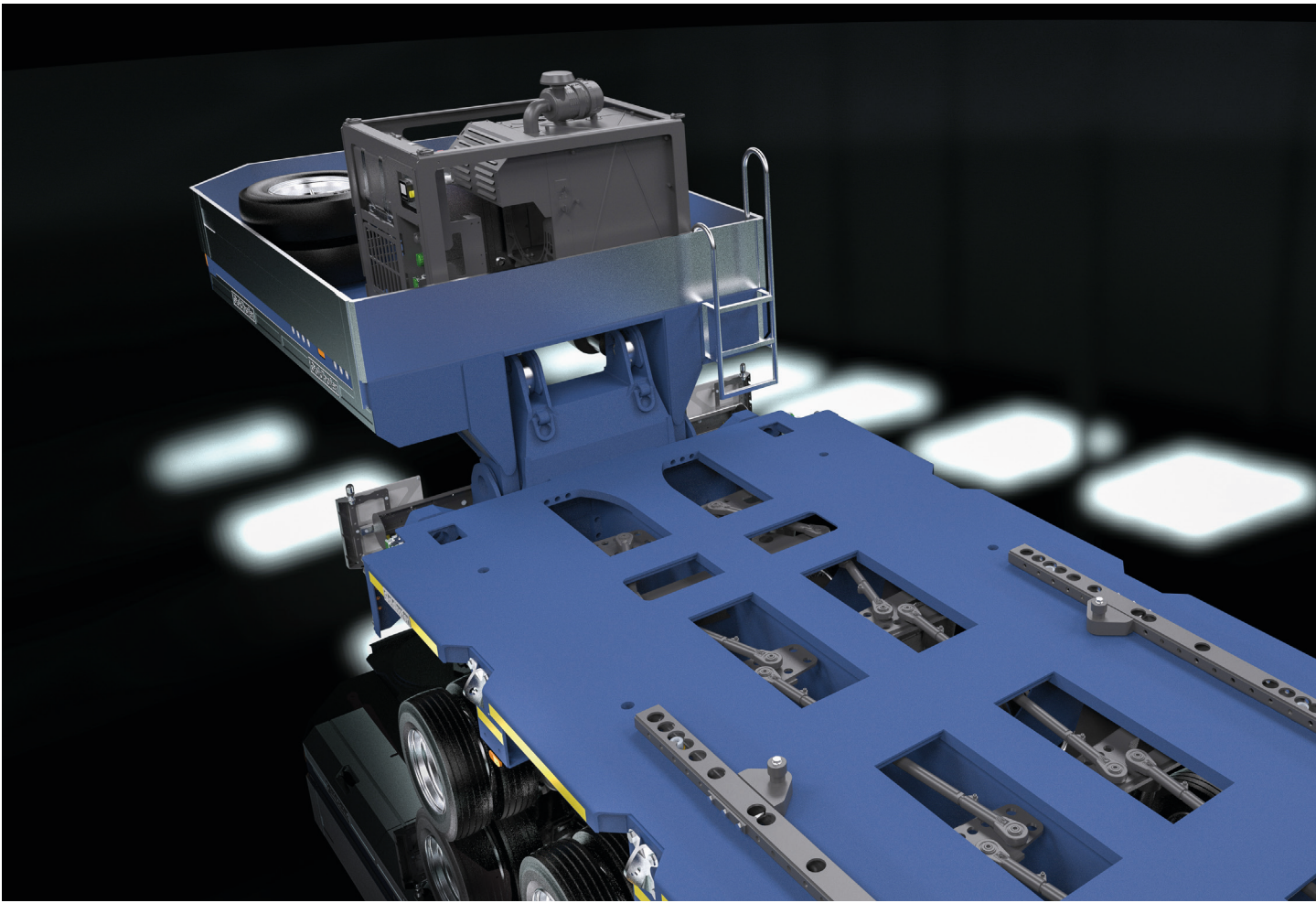


**MORE INFORMATION ON THE  
CABLE DRUM TRANSPORTER**

# RETROFITTABLE

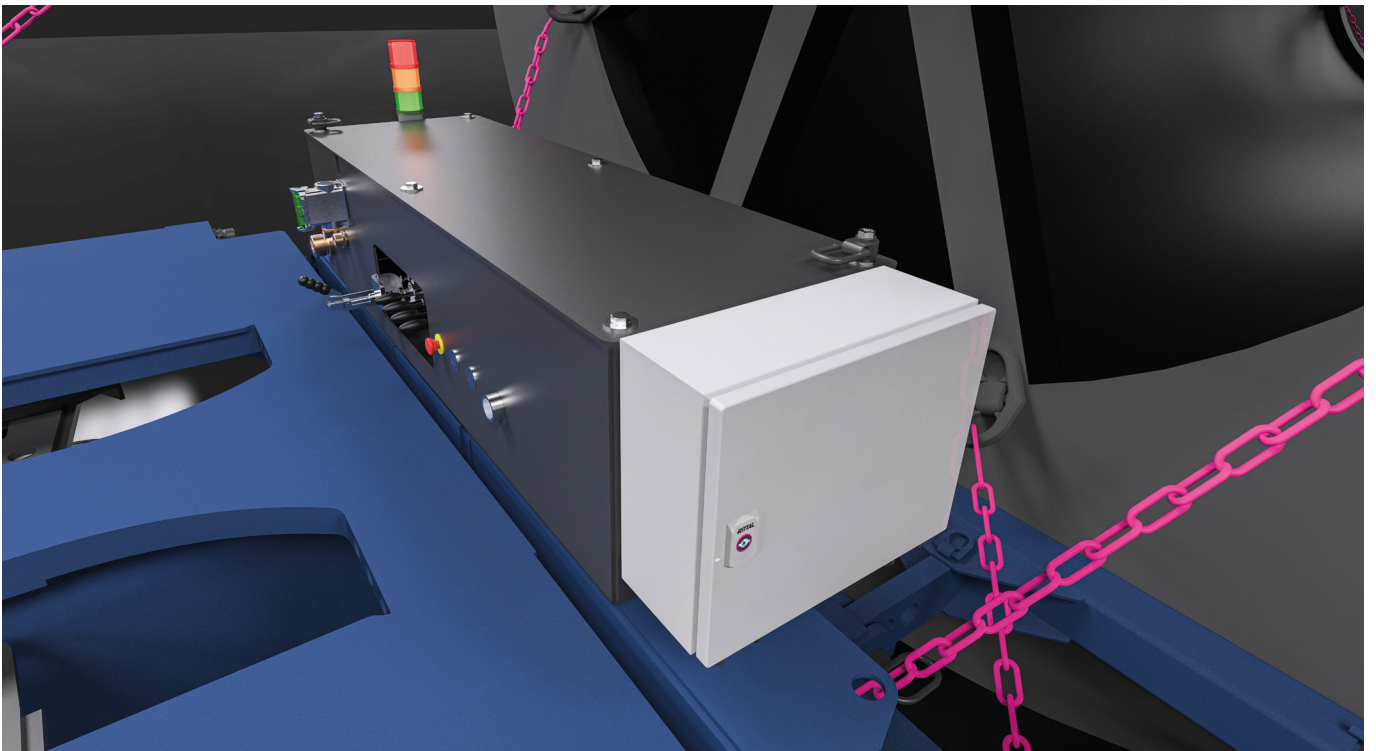
For a significantly reduced initial investment, the Goldhofer unwinding device can also be retrofitted to Goldhofer vessel decks already in the fleet using an adapter.





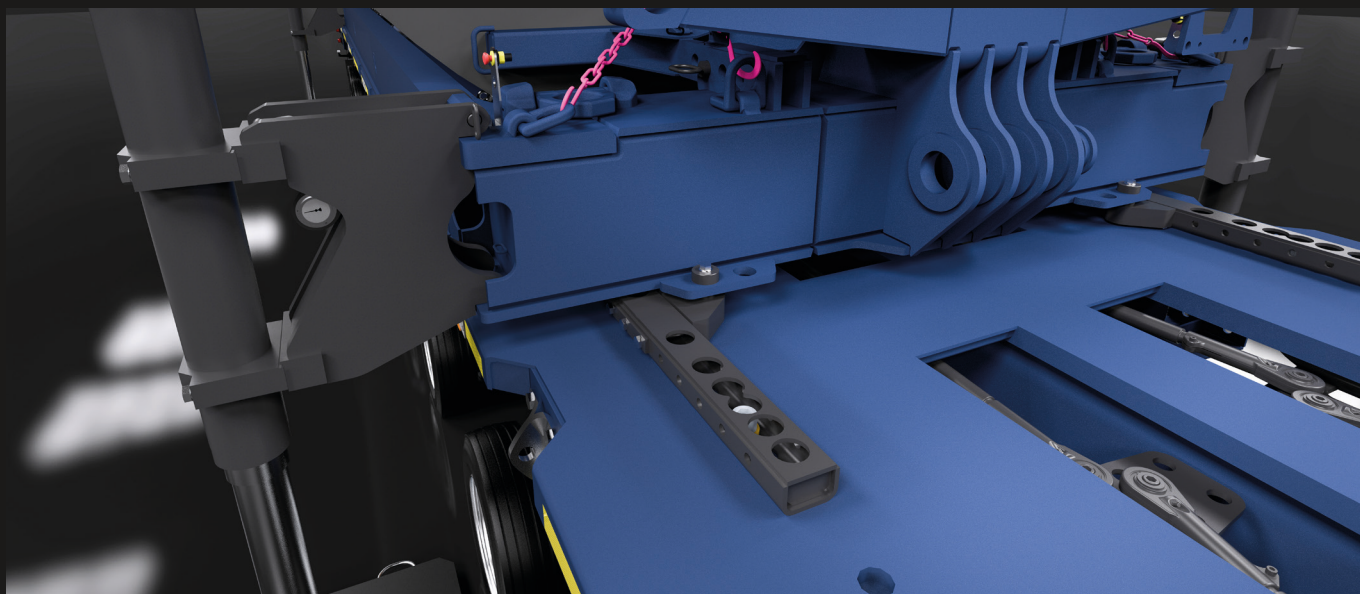
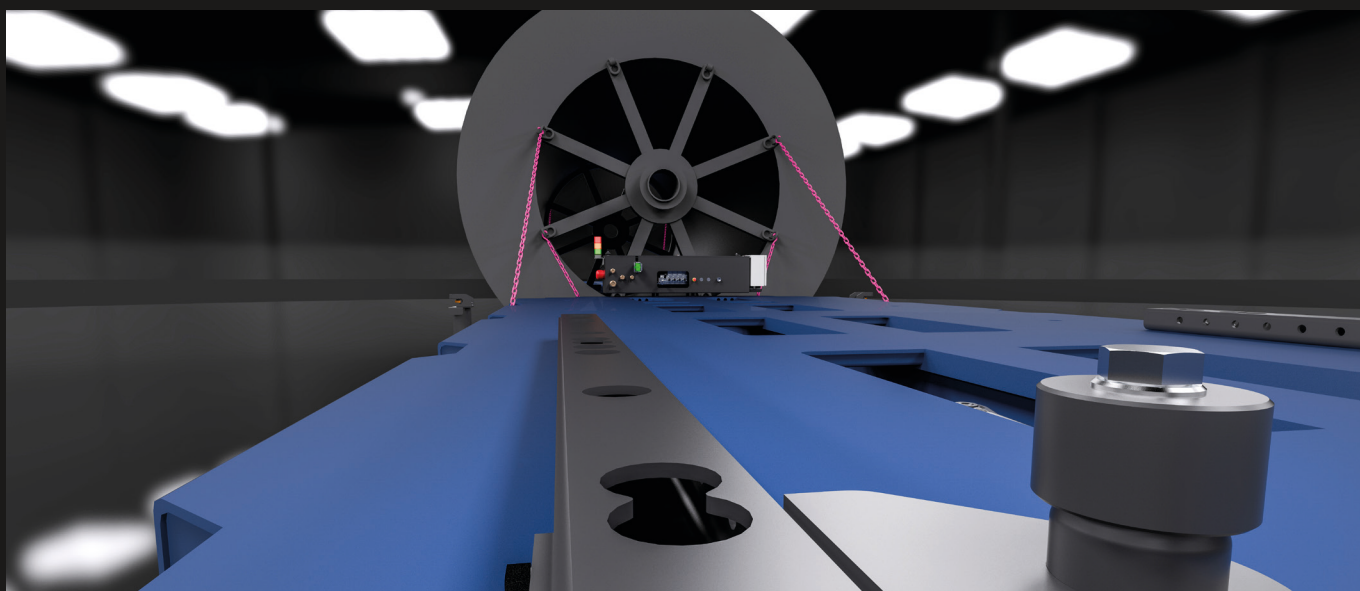
# CLEVER

The perfectly tuned hydraulic power pack combined with the specially designed control unit facilitates unprecedented unwinding speeds and safe, efficient control of the transport solution. In addition, all trailer functions can be controlled via remote control.



# SIMPLE

Easy-to-attach hydraulic supports allow the bridge to be raised to the loading area level under full load and to be driven under by the module combination. The bridge can be securely mounted on the loading area with special mounting clips.

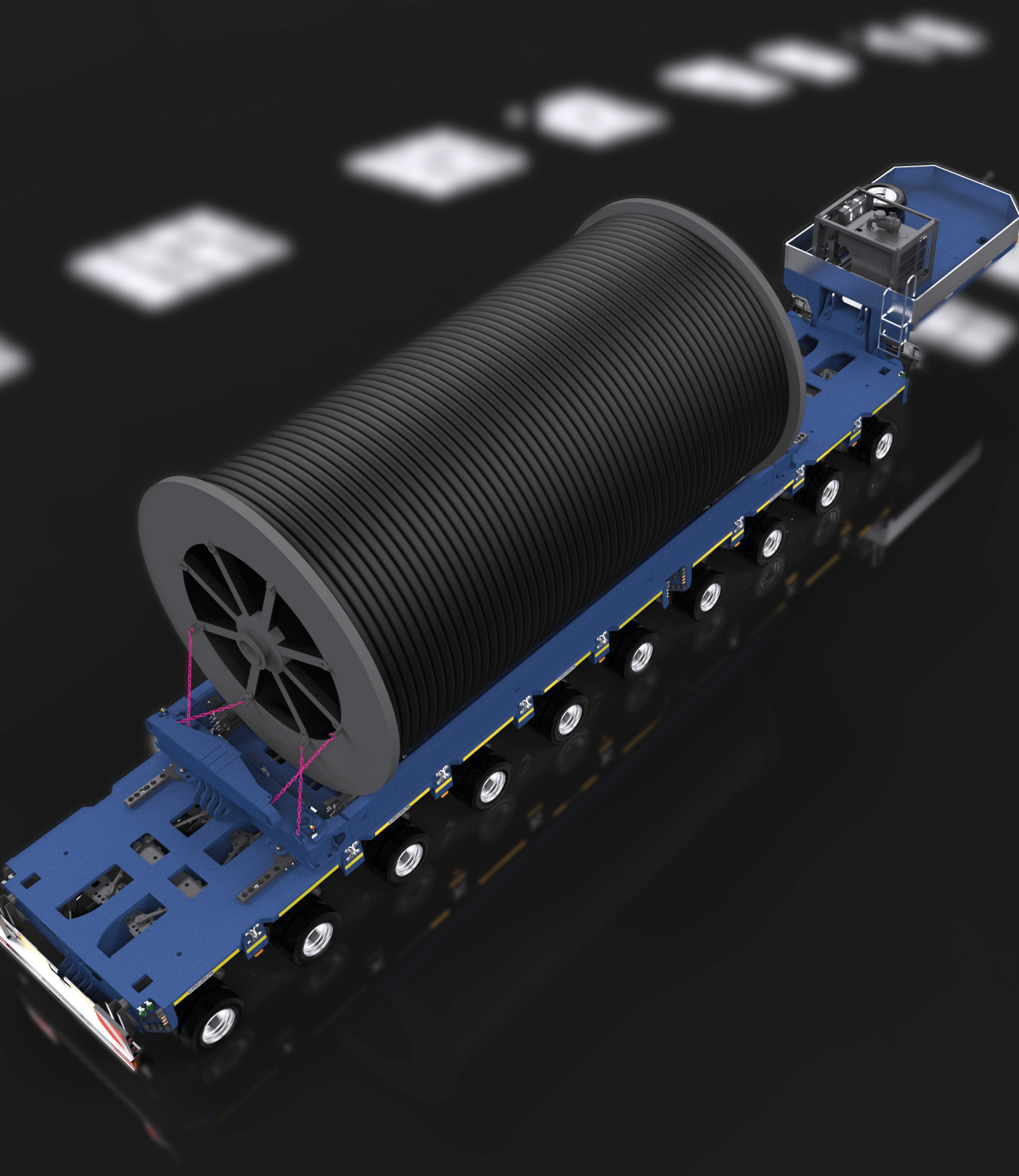




# IN ACTION







#### SALES

European Sales Tel.: +49 8331 15-341  
International Sales Tel.: +49 8331 15-342  
E-Mail: [sales-transporttechnology@goldhofer.com](mailto:sales-transporttechnology@goldhofer.com)

#### SERVICES AND SPARE PARTS

Tel.: +49 8331 15-400, Fax: +49 8331 15-247  
Emergency hotline: +49 172 837 61 65  
E-mail: [service-transporttechnology@goldhofer.com](mailto:service-transporttechnology@goldhofer.com)