



NORTH AMERICA



FLATBED-SEMI-TRAILERS & SEMI LOWLOADER



CONTENTS

FLATBED-SEMI-TRAILERS AND SEMI LOWLOADER

SEMITRAILERS FOR NORTH AMERICA	04
SERVICE AND SUPPORT	06
STZ-VL	08
STZ-H/L 6	10
STZ-P 9	12
»P12 PLUS«	14
»P12 PLUS« - COMBINATIONS	16
ACCESSORIES AND OPTIONS TECHNICAL DATA	20

SEMITRAILERS FOR NORTH AMERICA

Goldhofer offers a wide range of semitrailers designed to meet everyday needs and comply with varying North American regulations. For years, our semi lowloaders have been trusted for heavy haul, featuring robust frames, extendable decks, multiple axle technologies, widths and wheelbases – setting industry standards.



STZ-VL SIMPLY RELIABLE

08

In the tough daily transport routine, time counts above all. In order to load and unload various loads as quickly as possible, our STZ-VL lowboy trailer can be driven over from the front. With increasing weight and volumes of the loaded goods, it is also crucial that the vehicles themselves are as light as possible and, at the same time, able to carry high payloads. The STZ-VL is a true champion in this case and it will make your transports safe and efficient.



STZ-H/L 6 NORTH AMERICA HIGH PERFORMER

10

The Goldhofer STZ-H 6 impresses with its robust chassis design and high lateral stability. Thanks to its intelligent telescopic design, it is quickly ready for operation and offers optimal maneuverability through a modern steering concept, which even allows for radio remote control. Equipped with hydraulic or air suspension, the trailer provides multiple load securing points for maximum transport safety. Additionally, it stands out with low maintenance costs and a long service life. Comprehensive accessories complete the package, making the STZ-H 6 a versatile and reliable companion in the transport industry.



STZ-P 9 GIANTS FOR AMERICA

12

Our semi lowloaders are tailor-made to the needs of North American transport industry. The axle spacing between the tridem axles can be adjusted to fulfill the various North American regulations. The low driving height makes the shortest permissible route for your wide range of cargos possible.



»P12 PLUS« MIX AND MATCH FOR MORE FLEXIBILITY

14

The Goldhofer »P12 PLUS« is an innovative, flexible, and efficient transportation solution. Due to its modular design, it offers a PLUS of multiple combinations, allowing configuration for any project.



SERVICE AND SUPPORT LEAVE IT TO US!

Efficient transport essentially depends on two factors: the vehicle and the personnel. You must always be able to rely on both of them. With a unique combination based on service and training offers, Goldhofer contributes to ensuring that both vehicle and personnel will never let you down.

24H AVAILABLE EMERGENCY HOTLINE

We minimize your operational downtime by ensuring our service staff are ready to assist with a wide range of issues. In the event of an emergency, call our 24-hour hotline.

The staff at Goldhofer Inc. consider themselves members of each customer's technical support team and are prepared to assist around the clock to guarantee operations stay on track.



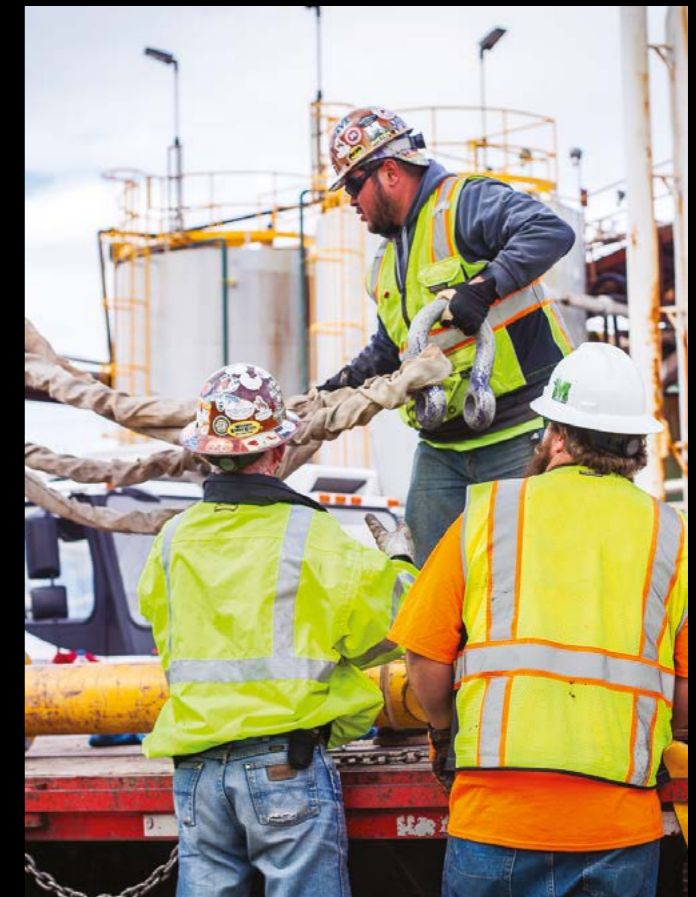
FOR 24/7 SUPPORT PLEASE CALL:

Telephone: +1 954-433-5617

FROM MIRAMAR FLORIDA

Our professional team in Miramar, Florida can support a wide range of issues such as building and converting vehicles, guiding complex transport cargos, delivering spare parts or carry out on-site repairs. Our service technicians are all trained and are readily available to carry out diverse and multifaceted assignments directly on location. We offer after sales support throughout the life of each product we sell and support you actively in terms of maintenance. Our approach ensures essential procedures are run early, damage is avoided, and equipment availability is significantly increased.

- » 24-hour service
- » Local service partner
- » Local spare parts supply
- » Technical support
- » Transport advice and trainings by Goldhofer



TRANSPORT ENGINEERING

- » Software programs for transport project management
- » Transport support through service engineering

SPARE PARTS

- » Fast availability
- » Local spare parts stock
- » Online electronic spare parts catalogue

REPAIRS

- » Maintenance and repair works
- » Workshop vehicles
- » In-house repair shop

STZ-VL SIMPLY RELIABLE

YOUR BENEFITS

- ✓ Coupling point between drop deck and bogie
- » Versatile vehicle combinations for the most varied utilizations and maximum extension
- ✓ Can be combined with jeep dollies
- » Simple increase of the payload
- » User-friendly operation of the vehicle
- ✓ Forced steered lowboy trailer with manual steering
- » Easy maneuvering around tight bends and in tight spaces

TECHNICAL FEATURES

- + Axle load 26,400 lbs at 50 mph [12 t at 80 km/h]
(depending on country-related regulations)
- + Tires 245/70 R 17.5
- + Vehicle width 8' 4" [2,550 mm]
- + Axle spacing 5' [1,525 mm]
- + Maximum steering angle 45°



**COUPLING POINT
BETWEEN DROP
DECK AND BOGIE**



**HORIZONTAL PIN
BETWEEN THE LOW-
DECK AND BOGIE**



**SIMPLE
OPERATION**



LOWBOY



GOOSENECK



- + Fifth wheel load 61,700 lbs [28 t]
- + Coupling height 51" [1,295 mm]
- + Swing clearance radius 10' 6" [3,200 mm]
- + Hydraulic
- + Center beam

BRIDGE DESIGN



- + Deck design: Flatbed with removable inlay mattresses
- + Construction height 12" [300 mm]
- + Single telescopic

REAR BOGIES



- + Optional Flip Axle
- + Optional Booster axle
- + Width excavator boom recess 2' 6" [760 mm]
- + Axle compensation 10.6" [270 mm]
- + Number of axles 3+1 axles

STZ-H/L 6 NORTH AMERICA HIGH PERFORMER

YOUR BENEFITS

- ✓ Wide trailer with hydraulic or air suspension
- » Highest side stability for maximum transport safety
- ✓ Hydraulic gooseneck
- » Optimal ground clearance when passing railway crossings and other obstacles
- ✓ Up-to-date steering concept with the possibility of radio remote control override
- » Optimum maneuverability to help to manage and enter tight corners and jobsites
- ✓ Intelligent telescopic design
- » Quickly ready in operation

TECHNICAL FEATURES

+ Axle load	26,400 lbs at 50 mph	[12 t at 80 km/h]
+ Loading height (H)	37" (+6.7"/-3.5")	[950 mm (+170 mm/-90 mm)]
+ Loading height (L)	37" (+4.5"/-4.1")	[940 mm (+115 mm/-105 mm)]
+ Axle compensation (H/L)	10.2" / 8.6"	[260 mm/ 220 mm]
+ Lift Axles	1-4	
+ Twin tires	245/70 R 17.5	
+ Vehicle width	9' 10"	[3,000 mm]
+ Max. steering angle	± 45°	



3-AXLE BOGIES
COMPLIANT TO NORTH
AMERICAN REGULATIONS



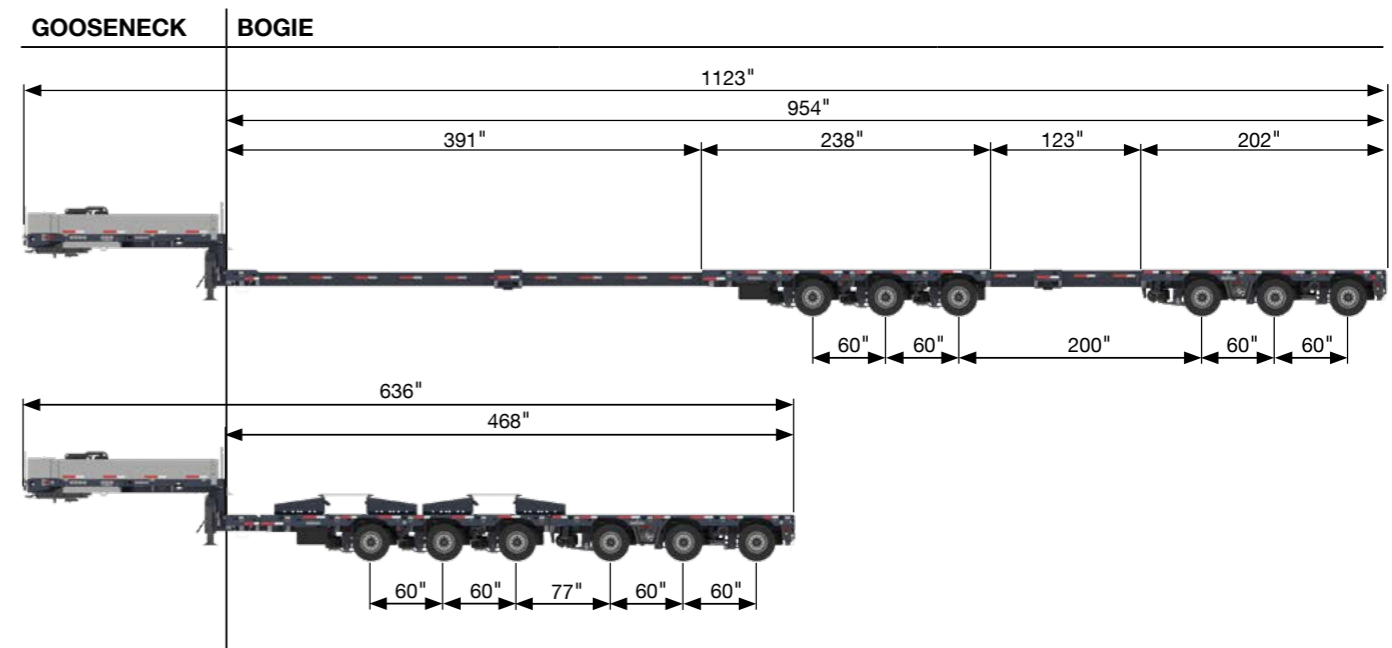
**HIGHEST SIDE
STABILITY**



**QUICKLY READY IN
OPERATION**



SEMI LOWLOADER



- | | |
|--|-----------------------------------|
| + Fifth wheel load | 57,300 lbs [26t] |
| + Coupling height | 51" [1,300 mm] |
| + Swing clearance radius | 126" [3,200 mm] |
| + Hydraulic | |
| + Center beam | |
| + Axle spacing between tridems | 6' 4" - 16' 8" [1,950 - 5,080 mm] |
| + Maximum extension between gooseneck and front tridem | 30' 3" [9,230 mm] |
| + Maximum extension between front and rear tridem | 10' 3" [3,130 mm] |

STZ-P 9 GIANTS FOR NORTH AMERICA

YOUR BENEFITS

- ✓ No assembly/dismantling on site
- » Quickly ready in operation
- ✓ Compliance with the legal requirements for road haulage
- » Universal utilization-capable vehicle
- ✓ Extremely low dead weight
- » Optimized dead weight to payload ratio

TECHNICAL FEATURES

- + Axle load 26,400 lbs at 50 mph [12 t at 80 km/h]
- + Loading height 3' 6" (+1' 4" / -8") [1,080 mm (+400 mm / -200 mm)]
- + Axle compensation 2' [600 mm]
- + Tires 245/70 R 17.5
- + Vehicle width 9' 10" [2,990 mm]
- + Maximum steering angle 60°



3-AXLE BOGIES
COMPLIANT TO NORTH
AMERICAN REGULATIONS



LOW DEAD WEIGHT



**RETRACTABLE REAR
BOGIE UNDER LOAD**



SEMI LOWLOADER



GOOSENECK | BOGIE



- + Fifth wheel load 57,300 lbs [26t]
- + Coupling height 51" [1,300 mm]
- + Swing clearance radius 110" [2,800 mm]
- + Hydraulic
- + Center beam

- + Axle spacing 5' [1,525 mm]
- + Spacing between tridems 5' 0" - 23' 1" [1,525 - 7,045 mm]
- + Maximum extension between tridems 2x 18' 1" [2x5,520 mm]

MAXIMUM EFFICIENCY

With the use of a tractor the length of the trailer can be shortened by pushing the rear bogie of the STZ-P 9 – even under load (of course it also can be extended again after passing a critical situation). That gives the vehicle the maneuverability and compact size needed to deliver different goods in the shortest possible time.



»P12 PLUS« MASTER OF AMERICAN TRANSPORT

YOUR BENEFITS

- ✓ High adaptability
- » Can be individually adapted to any transportation task
- ✓ Multiple modular combinations
- » Innovative design offers optimal dead weight-to-payload ratio in any transportation configuration
- ✓ Ease of operation
- » Easy reverse driving with active automatic steering maximizing efficiency and time-savings

TECHNICAL FEATURES

+ Axle load	26,400 lbs at 50 mph	[12 t at 80 km/h]
+ Payload	281,000 lbs	[127 t]
+ Loading height	3' 7" (+1' 4" / -8")	[1,085 mm(+400 mm / -200 mm)]
+ Axle compensation	2'	[600 mm]
+ Tires	245/70 R 17.5	
+ Vehicle width	9' 10"	[2,990 mm]
+ Maximum steering angle	60°	



**HIGH TRANSPORT
FLEXIBILITY**



**LARGE VARIETY
OF COMBINATIONS**



**EASY
REVERSE DRIVING**



SEMI LOWLOADER



GOOSENECK WITH FRONT BOGIE



- + Fifth wheel load
57,300 lbs [26 t]
- + Coupling height
51" [1,300 mm]
- + Swing clearance radius
9' 2" [2,800 mm]
- + Opt. long gooseneck
swing clearance radius
11' 2" [3,400 mm]
- + Hydraulic
- + Center beam

INTERMEDIATE BOGIES



- + Axle spacing
5' [1,525 mm]
- + Spacing between
tridems
6' 7" / 14' 1"
[2,000 mm / 4,300 mm]
- + Extendability
1x7' 7" [1x2,300 mm]

REAR BOGIE



- + Axle spacing
5' [1,525 mm]
- + Spacing between
tridems
6' 7" / 14' 1"
[2,000 mm / 4,300 mm]



DRAWBAR COMBINATION

Combination with intermediate and rear bogies for even bigger flexibility.

»P12 PLUS« COMBINATIONS

1. SEMITRAILER COMBINATIONS

Gooseneck with front bogie | rear bogie
Payload 157,000 lbs ^[75 t]



Gooseneck with front bogie | intermediate bogies | rear bogie
Payload 223,000 lbs ^[101 t]



Gooseneck with front bogie | 2 intermediate bogies | rear bogie
Payload 281,000 lbs ^[127 t]



2. DROP DECK COMBINATIONS

Gooseneck with front bogie | excavator deck | intermediate bogie | rear bogie
Payload 192,000 lbs ^[87 t]



3. DRAWBAR COMBINATIONS

Drawbar | intermediate bogie | rear bogie
Payload 119,000 lbs ^[54 t]



Drawbar | 2 intermediate bogies | rear bogie
Payload 175,000 lbs ^[80 t]



4. LONG LOAD COMBINATIONS

Gooseneck with front bogie | 1 intermediate bogie | rear bogie | turntables
Payload 212,000 lbs ^[96 t]



Gooseneck with front bogie | 2 intermediate bogies | rear bogie | turntables
Payload 270,000 lbs ^[122 t]



Gooseneck with front bogie | 3 intermediate bogies | rear bogie | turntables
Payload 331,000 lbs ^[150 t]



5. EMPTY RETURN

Axles may be raised when empty (depending on state related regulations).





LOWBOY | SEMI LOWLOADER

ACCESSORIES AND OPTIONS

GENERAL ACCESSORIES	<ul style="list-style-type: none">+ Knorr "TIM"/Wabco "Smartboard"+ "easyCONTROL" remote steering+ Storage box under the loading platform+ Working lights+ Lift axle
GOOSENECK	<ul style="list-style-type: none">+ Spare wheel carrier+ Sidewalls+ Premium tool box+ Gasoline/Diesel power pack
LOADING PLATFORM	<ul style="list-style-type: none">+ Outriggers+ Sliding table+ Inserts to cover the gap between gooseneck and tridems when trailer is extended+ Threaded bushings for screwable lashing points+ Screwable lashing points+ Wader pockets for twist-locks+ Twist-locks+ Tarpaulin hocks
REAR	<ul style="list-style-type: none">+ Mechanical landing legs+ Detachable ramps+ Tow coupling

*Accessory options are vehicle-dependent and may not be available for all vehicle types





LOWBOY | SEMI LOWLOADER

TECHNICAL DATA

	STZ-VL	STZ-H 6	STZ-P 9	»P12 PLUS«
Axle load <i>(depending on country related regulations)</i>	26,400 lbs at 50 mph [12 t at 80 km/h]	26,400 lbs at 50 mph [12 t at 80 km/h]	26,400 lbs at 50 mph [12 t at 80 km/h]	26,400 lbs at 50 mph [12 t at 80 km/h]
Fifth wheel load	61,700 lbs [28 t]	57,300 lbs [26 t]	57,300 lbs [26 t]	57,300 lbs [26 t]
Loading height	depending on the design of the deck	37" (H) (+6' 7"/-3.5") [950 mm (+170mm/-90mm)] 37" (L) +4' 5"/-4.1" [940 mm (+115mm/-105mm)]	43" (+1' 4"/-8") [1,080 mm (+400 mm/-200 mm)]	43" (+1' 4"/-8") [1,085 mm (+400 mm/-200 mm)]
Axle compensation	10.6" [270 mm]	10.2" / 8.6" [260 mm/220 mm]	2' [600 mm]	2' [600 mm]
Tires	245/70 R 17.5	245/70 R 17.5	245/70 R 17.5	245/70 R 17.5
Vehicle width	8' 4" [2,550 mm]	9' 10" [2,990 mm]	9' 10" [2,990 mm]	9' 10" [2,990 mm]
Axle spacing	5' [1,525 mm]	5' [1,525 mm]	5' [1,525 mm]	5' [1,525 mm]
Spacing between tridems	—	6' 5" - 16' 8" [1,950 mm - 5,080 mm]	5' - 23' 1" [1,525 - 7,045 mm]	6' 7" / 14' 1" [2,000 - 4,300 mm]
Extendability	Rigid Single telescopic	1x 30' 3" [1x 9,230 mm] (Gooseneck / front tridem) 1x 10' 3" [1x 3,130 mm] (front tridem/rear tridem)	2x 18.1 ft [2x 5,520 mm]	3x 7' 7" [3x 2,300 mm]
Maximum steering angle	45°	45°	60°	60°
Width excavator boom recess*	2' 6" [760 mm]	—	—	—
Number of axles	3+1	6	9	6/9/12



STZ-VL



STZ-H6



STZ-P 9



»P12 PLUS«





CONTACT TRANSPORT TECHNOLOGY

GOLDHOFER INC.

7401 Riviera Boulevard, Miramar, FL 33023, USA

Phone: +1 954-433-5617

Web: usa.goldhofer.com, E-Mail: info.usa@goldhofer.com

SALES | SERVICE | PARTS

Phone: +1 954-433-5617

E-Mail: Sales.USA@Goldhofer.com

E-Mail: Parts.USA@Goldhofer.com

E-Mail: Service.USA@goldhofer.com